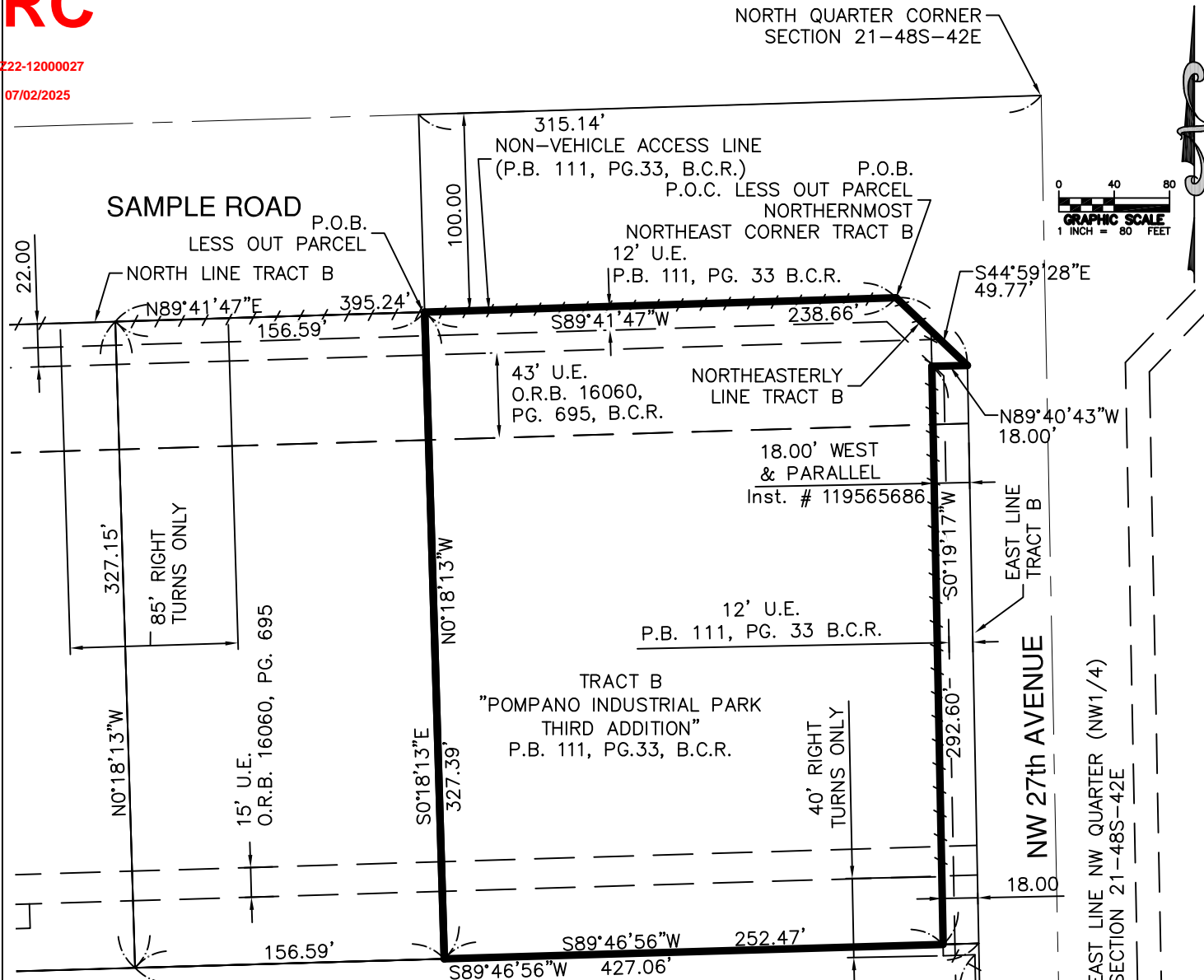


P222-12000027

07/02/2025



ABBREVIATIONS:

- O.R.B. - OFFICIAL RECORD BOOK
- P.B. - PLAT BOOK
- PG. - PAGE
- B.C.R. - BROWARD COUNTY RECORDS
- P.O.C. - POINT OF COMMENCEMENT
- P.O.B. - POINT OF BEGINNING
- P.O.T. - POINT OF TERMINATION
- NVAL - NON-VEHICULAR ACCESS LINE

SURVEYOR'S NOTES:

1. BEARINGS SHOWN HEREON ARE BASED ON PLAT BEARING OF S89°41'47"W ALONG THE NORTH LINE OF TRACT B AS SHOWN ON THE "POMPAÑO INDUSTRIAL PARK THIRD ADDITION", (P.B. 111, PG. 33, B.C.R.)

SEE SHEET 2 OF 2 FOR SKETCH

SKETCH & DESCRIPTION

THIS SKETCH DOES NOT REPRESENT A BOUNDARY SURVEY

CERTIFIED TO:

FESTIVAL FLEA MARKET

No. 5857

HEREBY CERTIFY THAT THIS SKETCH MEETS STANDARDS OF PRACTICE AS SET FORTH BY THE FLORIDA DEPARTMENT OF AGRICULTURE AND CONSUMER SERVICES OF PROFESSIONAL SURVEYORS AND MAPPERS IN CHAPTER 5J-17, FLORIDA ADMINISTRATIVE CODE PURSUANT TO SECTION 172-027, FLORIDA STATUTES. DATED THIS 23rd DAY OF DECEMBER 2024 A.D.

Martin P. Rossi

MILLER LEGG

South Florida Office: 13680 NW 5th Street, Suite 200
Sunrise, Florida - 33325
954-436-7000
www.millerlegg.com

STATE OF

MARTIN P. ROSSI
PROFESSIONAL SURVEYOR AND MAPPER
STATE OF FLORIDA REGISTRATION No. 5857
VALID WITHOUT THE SIGNATURE AND THE ORIGINAL
CERTIFICATE OF AUTHORIZATION: LB6680

REVISIONS

DWN. CHK.

DRAWN BY:

LP

CHECKED BY:

MR

PROJECT NO.
24-00048

FILE NO.
SD-2